



Metalclad air-insulated switchgear

Medium Voltage Switchgear



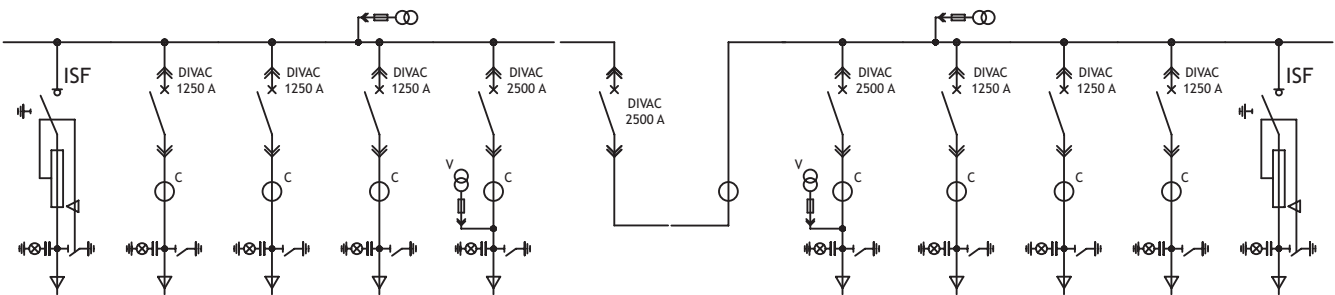
General characteristics

- Modular construction
- Extensible
- Small installation area
- Easy to operate
- Operated exclusively from the front
- Internal arc resistant
- Equipped with vacuum circuit breaker (class E3 M2) with increased mechanical and electrical life
- Several optional equipment available
- Wall standing solution
- Reduced maintenance and increased reliability
- Racking-In and racking-out of MV breaker behind arc-proof doors.

Technical data

Electrical Data		
Rated voltage	36kV	
Insulation level	basic	option
- impulse (1,2/50 ms)	170 kVp	200 kVp
- power frequency (50Hz/1 min)	70 kV	80 kV
Rated frequency	50/60 Hz	
Busbar rated current	630 A to 2500 A	
Tee-of rated current	630 A to 2500 A	
Short circuit making current	40kA - 63 kA	
Rated short-time current	16kA - 25 kA (1 or 3s)	
Mechanical characteristics		
Protection degree (IEC 60529)	IP3 (IP4 under request)	
Standard colors	RAL 7035	
Dimensions (mm)		
Height	2250 mm	
Depth	2570mm	
Width		
tee-off current up to 1250 A	1200 mm	
tee-off current up to 2500 A	1300 mm	

Typical functions



C&S Efacec MV India Pvt. Ltd.

Works: D-14, Site-IV, Surajpur Industrial Area, Kasna Road, Greater Noida-201306(U.P.) India
Tel.: +91-120-4710000 | Fax: +91-120-4710034 | www.csefacec.com | Email: info@csefacec.com



Efacec Energia Main Office:

Ap. 1018 | 4446-952 S. Mamede Infesta | Portugal
Tel: +351 229 562 300 | Fax: +351 229 562 870 | web: www.efacec.com